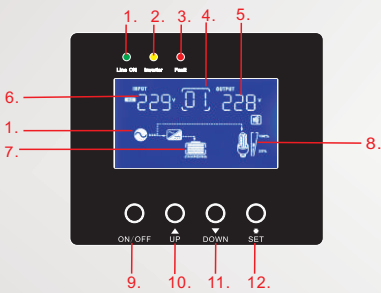


# Economic Inverter

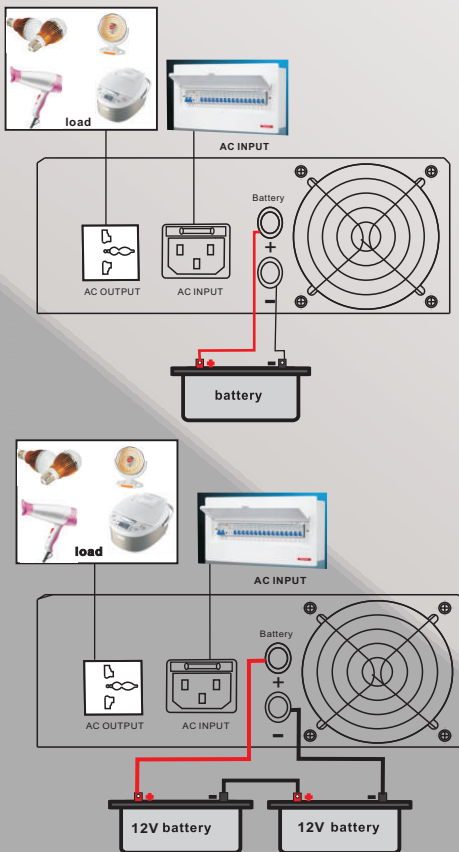


## LCD display information:



1.	AC	AC input voltage normal
2.	INVERTER	Battery mode
3.	FAULT	False signal light
4.	Hz/(01)	output frequency / Working mode
5.	OUTPUT	AC output voltage
6.	INPUT	AC input voltage
7.	BATT	Battery working condition and capacity
8.	LOAD 25%--100%	Load power Overload condition
9.	⊙	MUTE/FUNCTION
10.	⊙	ON/OFF
11.	⊙	UP
12.	⊙	DOWN

## System Connection:



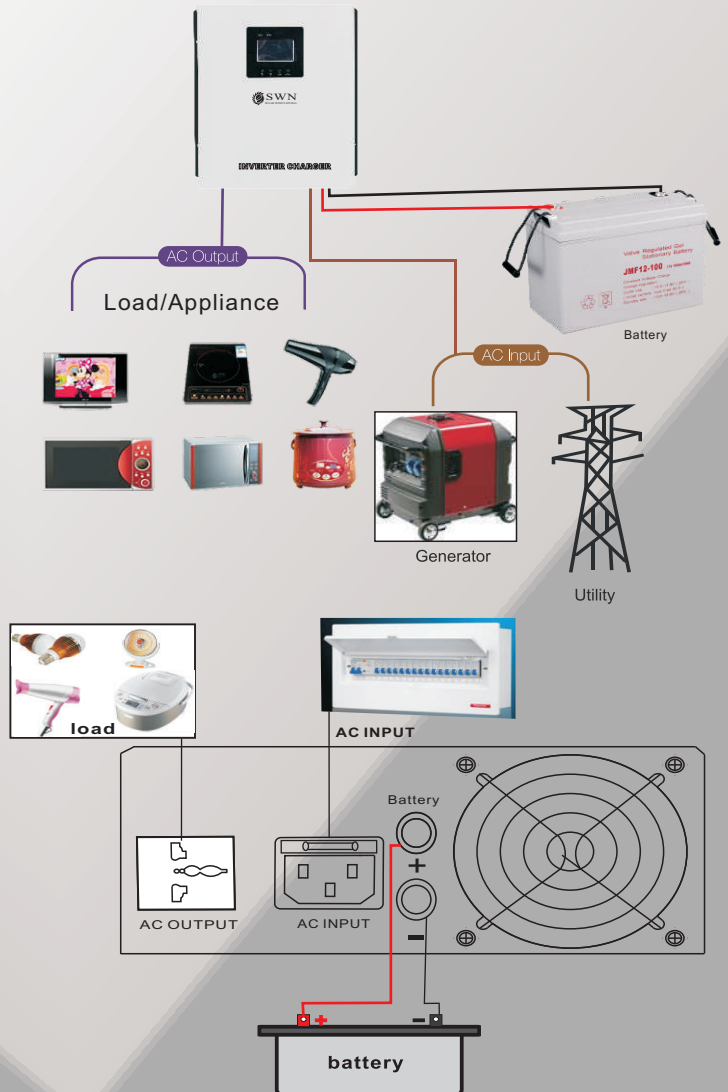
## Features and function:

- Pure sine wave output
- AC Charging current 15A
- High-low voltage protection
- Against overload, short-circuit Protection
- Over voltage, battery reverse connection (optional)
- Under-voltage and over-temperature protection
- Selectable battery priority or utility priority
- Have UPS function and AC charger function

## Application of solar energy system:

This is a pure sine wave inverter with AC charge and solar controller, LCD display offer users-configurable and clear data. Easy-to-operate button operation such as battery or city power priority, battery voltage, load, Input and output voltage query. It can use for solar power system, light, radio, DVD, TV set and the other house appliance.

## System Connection:



## Specification:

Model:	300W	500W	700W	800W	1000W	1200W	1500W
Rated power:	300W	500W	700W	800W	1000W	1200W	1500W
Peak power:	600W	1000W	1400W	1600W	2000W	2400W	3000W
AC input voltage range:	70V-135VAC(110VAC/120VAC) 140V-275VAC(220VAC / 230VAC )						
Input frequency range:	45-65HZ						
Battery voltage:	12VDC /24VDC						24VDC
DC voltage:	12VDC:10.5-15VDC/ 24VDC:21-30VDC						
Battery undervoltage alarm:	10.5VDC /21VDC						
Battery undervoltage	10VDC /20VDC						
Battery overvoltage protection:	17V±0.5V /34V±0.5V						
Voltage overvoltage alarm:	15V-16VDC/30V-32VDC						
Overload protection:	Rated power of 110% or more						
Temperature protection:	≥ 85 °C alarm, ≥ 90 °C off the machine						
Inverter output voltage:	110VAC/120VAC/ 220VAC/230VAC±2%						
Inverter output frequency:	50/60HZ±10%						
Inverter output waveform:	pure sine wave						
AC output voltage range:	AVR output 110VAC/120VAC/ 220VAC/230VAC±10%						
Output frequency range:	Automatic tracking						
Conversion time:	5ms-10ms						
Cooling method:	Intelligent fan control, ≤ 42 °C fan slow working , ≥ 45 °C fan high working .						
AC Charging current:	15A						
Working mode selection:	<p>Free to choose(SET)</p> <p>01: AC priority/City power priority: When city power is available, the inverter will work AC output, city power will supply power to appliances.The city power and sun power will charges 2 kinds power to battery. When city power failed, sun power will charges the battery and use battery power(solar power) to take the appliances.</p> <p>02: energy saving mode load power ≤ 10% off the machine, ≥ 11% -100% turn on</p> <p>03: Battery priority When it have sun power, sun power charges the battery and supply power to the appliances. When it does not have sun power or battery voltage ≤10.5V, inverter will automatic use city power to take the appliances, When battery voltage reach 13V inverter will use use battery power and sun power.</p>						
External Size(mm) D×W×H	290*310*135mm						
Packing Size(mm) D×W×H	380*370*450(2pcs)						
Net Weight(kg)	11	13	14	16	18	20	22
Gross Weight(kg)	13	15	16	18	20	22	24